

Climate Change: Orchestrating Sustainability

June 2, 2022

What is Sustainability?

"Meeting the needs of the present without compromising the ability of future generations to meet their own needs"- UN Brundtland Commission

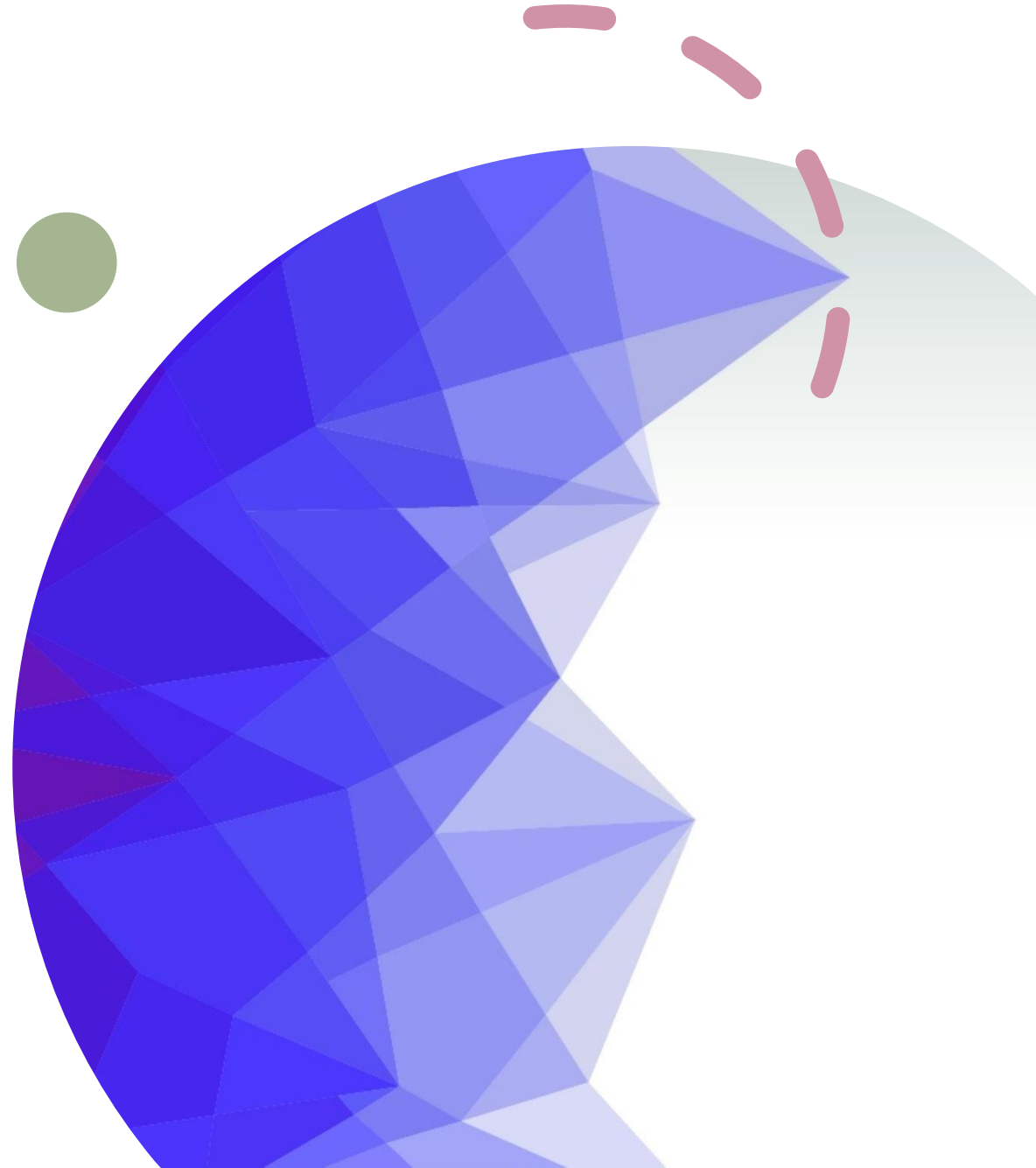


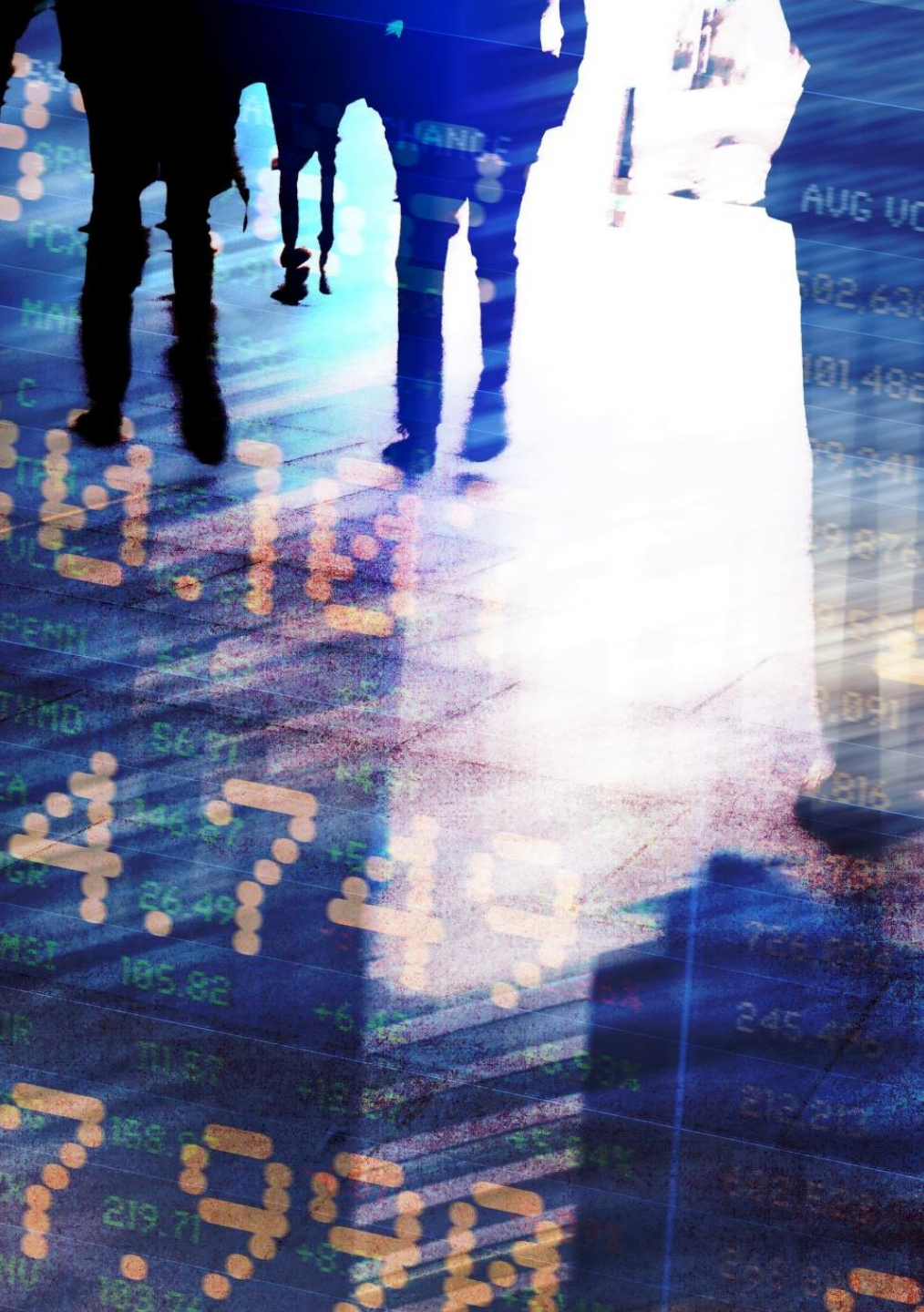
How do we live today so future generations can thrive?

Replacement
rate

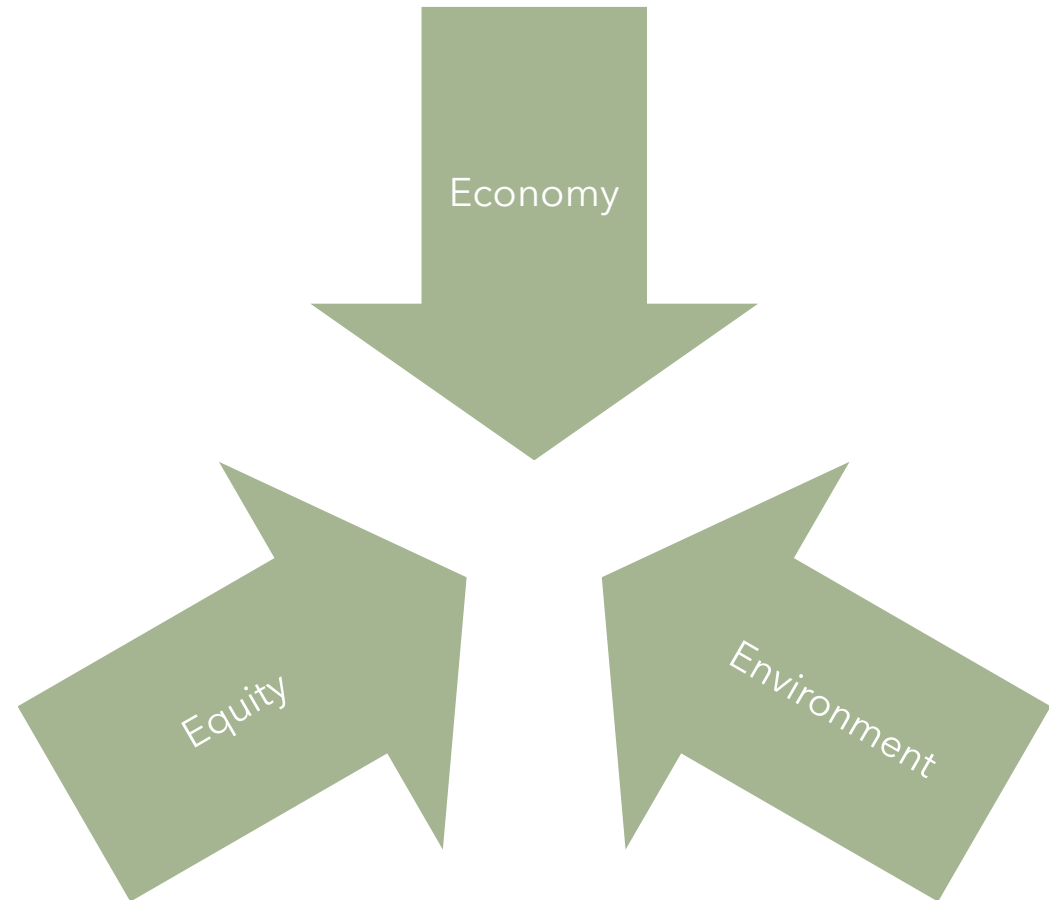
Equilibrium

Consumption





The Three E's





Artistic Response to Climate Change

Royal Scottish National Orchestra

Music Sustainability Association

Reno Philharmonic Commission- Altered Landscapes

The [uncertain] Four Seasons

Musicians in Exile

Music Declares Emergency



Julie's Bicycle

CREATIVE • CLIMATE • ACTION

A non-profit founded by the UK music industry in 2007, now powering climate action across the international creative and cultural community.

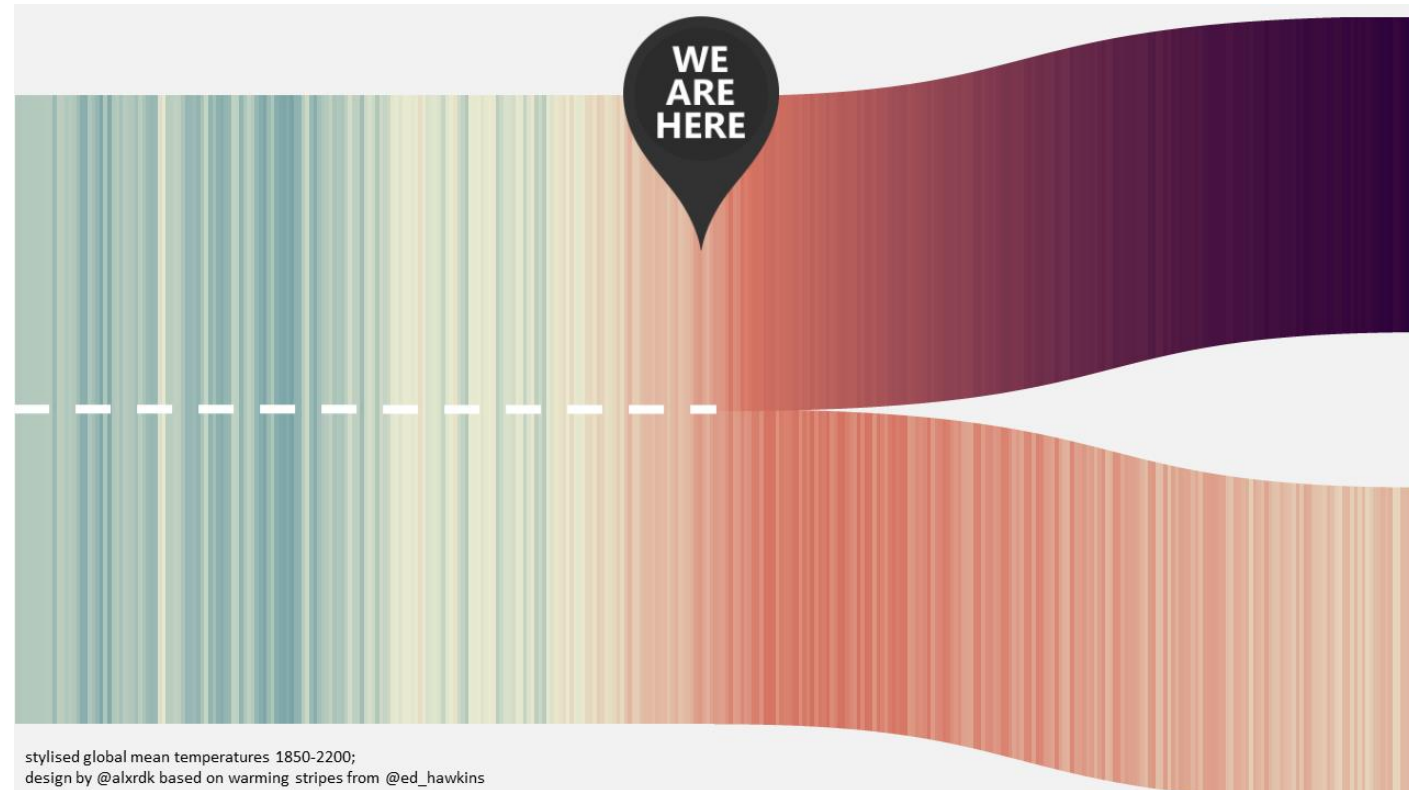
We support culture to:

- become net zero carbon and restore nature
- inspire public action on climate and ecology
- champion environmental justice and fairness

**We - the people alive now -
have to solve climate change.**

The climate won't stop changing
until we stop putting more
greenhouse gases into the
atmosphere.

The decisions we make now will
set the course for the next
millennium on this planet.



FUNDRAISING
FOR ENVIRONMENTAL CAUSES

COMMUNITY BUILDING FOR
ADAPTATION AND RESILIENCE

BRINGING PEOPLE TOGETHER

(NET) ZERO AND REGENERATIVE:

eliminating
emissions from how
we make and
present creative
work + helping to
restore nature,
ecosystems, healthy
communities

SHIFTING CULTURAL NORMS:

shifting behaviour in
priority areas like
transport and diet, and
influencing attitudes to
low carbon transition
by 'normalising'
changes that reach
into people's lives.

MAKING CHANGE IN SOCIETY:

active campaigning;
citizen engagement in
policy-making;
supporting voter
registration; creating
opportunities for
people to learn,
engage, and debate
on future directions for
a just society

KNOWLEDGE CREATION &
RESEARCH COLLABORATION

WORKING THROUGH TRAUMA,
GRIEF, AND OTHER EMOTIONS

Key stats 2019-20

Environmental data snapshot

In 2019-20: 636 NPOs reported on environmental impacts across 517 venues, 378 offices, 138 events, 233 tours and 59 productions. This snapshot for 2019-20 is based on the most commonly reported impacts: energy, water, waste, business and touring travel.

**7.5 million
km touring**



**22.7 million km
BUSINESS
TRAVEL**




**OVER
1 billion**
(1,029,024,000)
litres water



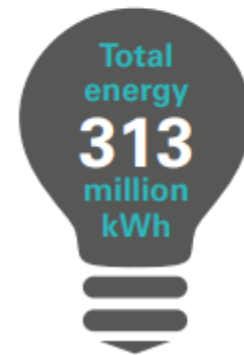
**5,263
tonnes
waste**




**47% of electricity
was procured on a
green tariff**



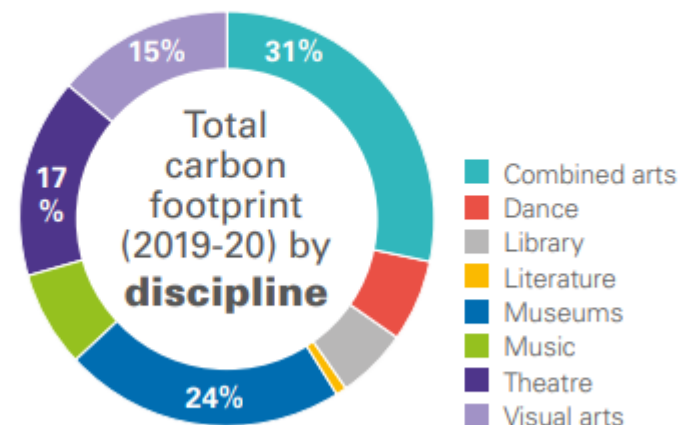
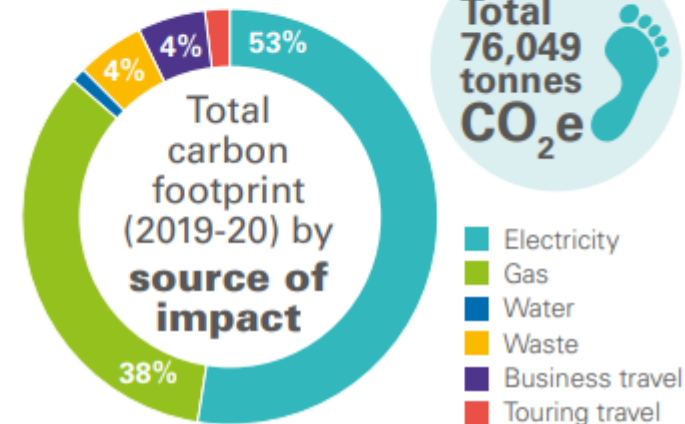
**Total
energy
313
million
kWh**



**Enough
to power
108,000 UK
households²**



**£21.9
MILLION
ENERGY
SPEND**

²Typical domestic consumption values as of 1 April 2020: 12,000kWh for gas and 2,900kWh for electricity (Source: [OFGEM](#))



Julie's Bicycle

CREATIVE • CLIMATE • ACTION

Seeing value in environmental measures

72%


have found their environmental policy useful for supporting funding applications

50%

have experienced creative or artistic benefits

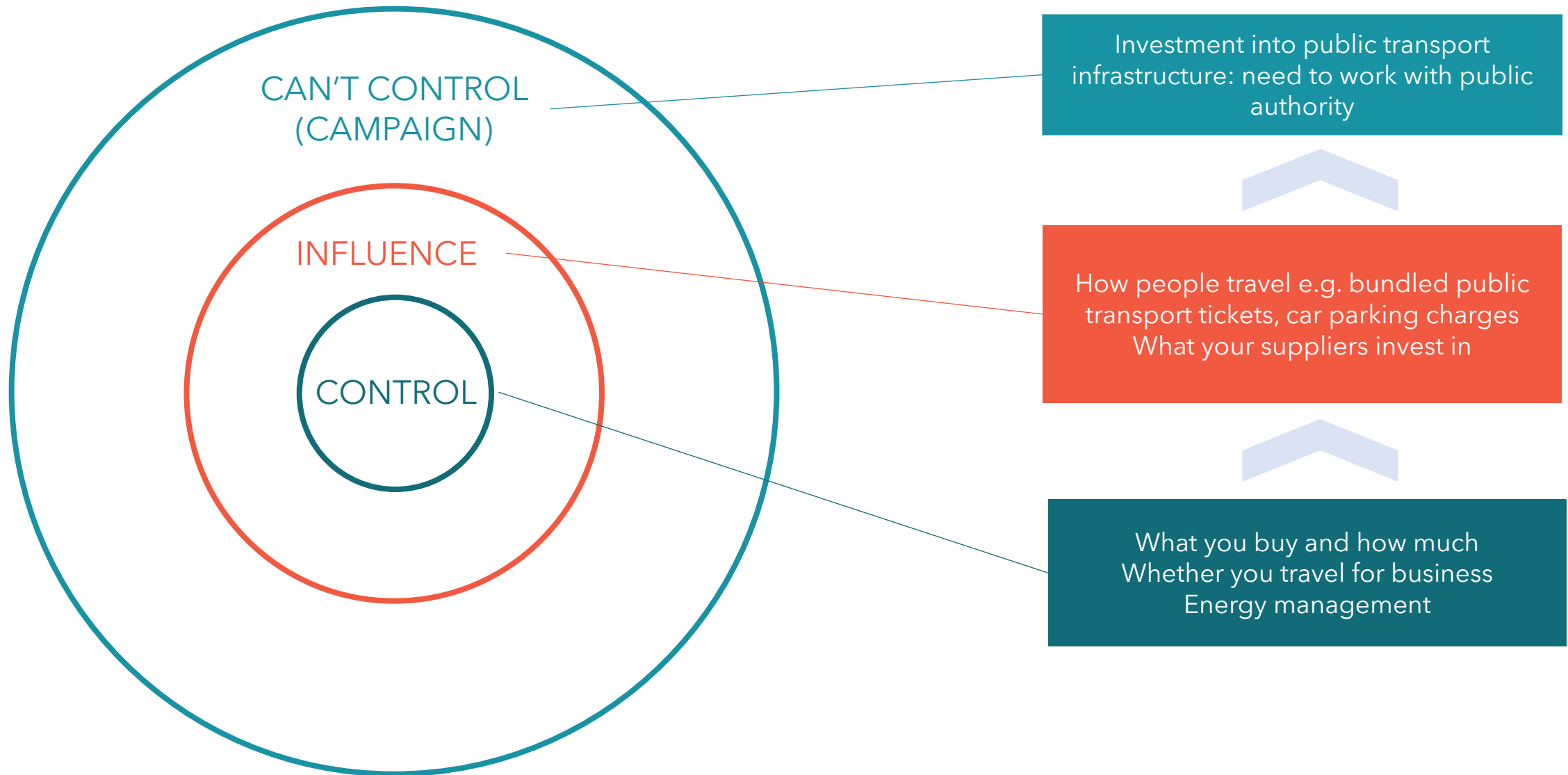
72%

reported team morale or wellbeing benefits



ENVIRONMENTAL
ACTION IS A PROCESS –
A WAY OF WORKING –
NOT AN END
DESTINATION

Examples...



Julie's Bicycle

CREATIVE • CLIMATE • ACTION

Online Resource Hub:



Case studies

for inspiring examples
of those taking action



Research

for in-depth and up to
date policy information



Podcasts

to hear from artists
and cultural
practitioners



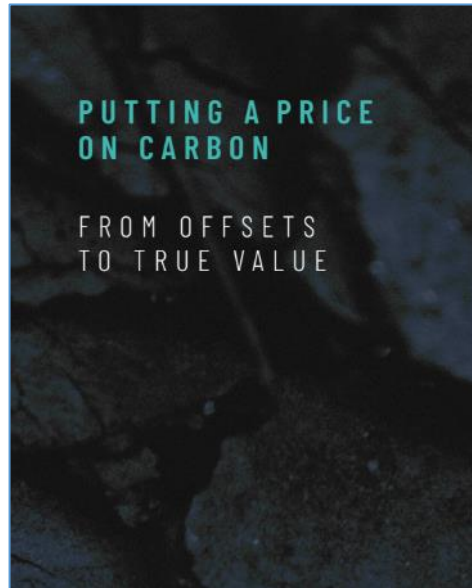
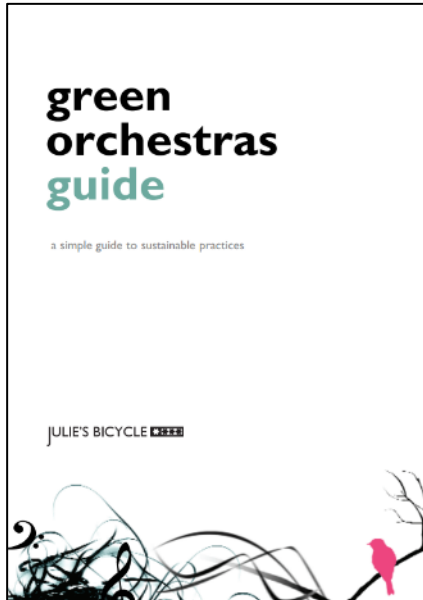
Webinars

for watching detailed
discussions



Guides

to read detailed advice
on a subject of your
choice





It's Not Easy Being Green.....

Mark Pemberton
Chief Executive, ABO





green orchestras guide

a simple guide to sustainable practices

JULIE'S BICYCLE 



ASSOCIATION OF **BRITISH ORCHESTRAS**



ASSOCIATION OF **BRITISH ORCHESTRAS**

ABO

Scottish Classical Music Green Guide 2021



ABO

ASSOCIATION OF **BRITISH ORCHESTRAS**

Environmental Responsibility

Cultural organisations and individuals lead the way in their approach to environmental responsibility

The climate crisis and environmental degradation are the most significant challenges facing all of us. The cultural sector in this country has already taken major steps to reduce its carbon footprint but it will need to go further. We will expect organisations that we invest in to develop clear pathways towards net zero carbon and to underpin those plans with a framework of measurement and progress reports. We want cultural organisations and individuals to embody the principles of environmental responsibility through the work they create, commission and programme, the way they run their businesses, buildings and projects and the conversations they have with their stakeholders, staff, peers and audiences.



ASSOCIATION OF **BRITISH ORCHESTRAS**

West Wing, Somerset House, London WC2R 1LA

Tel 020 7759 1060

www.abo.org.uk

email: info@abo.org.uk

Climate Change: Orchestrating Sustainability

June 2, 2022